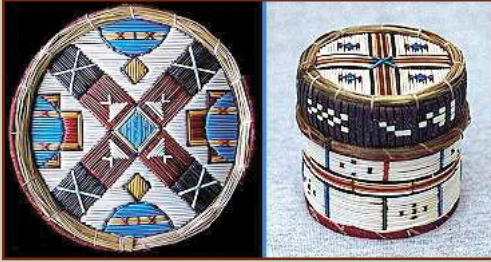


# American Indian and Multicultural Connection



Traditional Mi'kmaq Quillboxes

Quillwork was a form of embroidery using porcupine quills; the quills were used to decorate clothing, pouches, birchbark boxes, and baskets. Quillwork was almost entirely decorative but also sometimes incorporated spiritual symbols. This was common in the Great Lakes, Northeast and the Ohio Valley regions.